

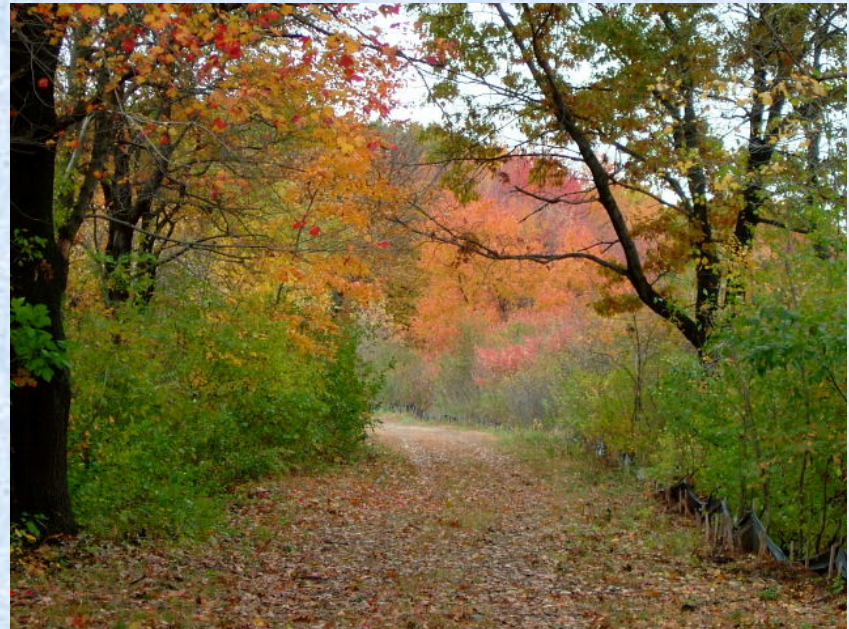


The Cochituate Rail Trail Framingham 2009

Mark Lamkin
Framingham Cochituate Rail Trail Committee

Trail features

- Approx. 1½ miles from Saxonville to Framingham at Route 30, additional 2 miles to downtown Natick at commuter rail station
- 1 roadway crossing at Old Conn. Path
- 2 driveway crossings – TJX and Luchetti property
- Abutters
 - Several businesses
 - Wetlands, stream, conservation reservation
 - 5 residential abutters



Framingham Cochituate Rail Trail Committee

- Created to work with Planning Dept. and Selectmen
 - Advise on trail design
 - Develop community outreach
 - Coordinate work days
- Expanded roles
 - Participate at public hearings
 - Communicate with Mass Turnpike Authority and MBTA
- Dual role as ‘Friends of the CRT’ group with Friends of Saxonville
 - Expand outreach
 - Apply for additional grants
 - Accept charitable donations



Original condition of trail (2001)

- Railway unused for decades
- Rails and most ties removed
- Vegetation overgrown
- Trail cleared by volunteers during work days organized by Framingham Cochituate Rail Trail Committee
 - Vegetation cleared
 - Trash removed
 - Junk removed
 - Remaining ties removed



Current status (2009)

- Trail cleared for most of its length
- Trail still not open to the public
- Phase 1 Opening
 - Design approved by town of Framingham and Mass. Turnpike Authority



Phase 1

- Open one section of trail ASAP
 - Old Conn. Path to Route 30
 - Driveway crossings at TJX and Luchetti property
 - Barriers and signs at ends of trail
 - Existing surface
- Funding
 - MassPike Tourism grant
 - REI Gives grant
 - DCR Recreational Trails grant, possible



Current status (2009)

- Permanent Trail easement from Mass. Turnpike (no fee)

- 99-year lease from MBTA (no fee)
 - All Appropriate Inquiry environmental assessment done
 - Brownsfield insurance possible
 - MBTA ready to sign lease
 - Board of Selectmen agreed to previous version of lease
 - Town Meeting to vote on lease at Annual Town Meeting, 2009



Current status (2009)

■ RFP for design in 2008

- 6 proposals received
- Weston & Sampson selected and now on board

■ Tasks

- 25%, 75% and 100% design and 100% design of crossing at Old Conn. Path
- Additional task to be negotiated: Phase 1



Nearby projects we are monitoring

- 2 School St.
 - Redevelopment of State Lumber
 - Planning Board
 - Park, vehicle parking, racks
- 500 Old Conn. Path
 - Improvements to office park
 - Planning Board
 - Trail crossing at Old Conn. Path, weekend parking
- 597 Old Conn. Path
 - Concrete batch plant
 - ZBA
 - Negative impact
- Gas Station, Speen St. & Route 30
 - Improvements to gas station
 - Planning Board
 - Connection to trail, rack, table



Funding for Full Trail

■ Design

- Mitigation funds from nearby projects
 - Natick Mall
 - 500 Old Conn. Path
 - Loew's
- MassPike Tourism grant

■ Construction

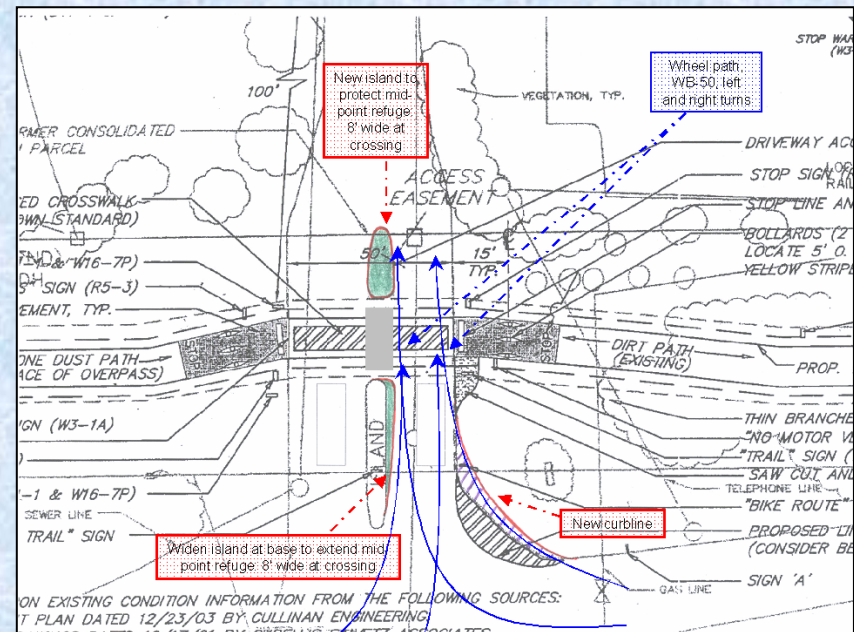
- Likely to be done as part of state-mandated sewer project
 - Relocating sewer line along CRT saves town money
 - Part of economic stimulus program
- TIP funds could be sought



Design

■ Design Process

- Committee meetings with Weston & Sampson
- Coordination of design with Framingham DPW
- Coordination of design with Natick
- Public meetings
- Meetings with Framingham Conservation Commission, Planning Board and Disabilities Commission



Some of our supporters

- Friends of Saxonville
- John Harvard's Brew House
- REI
- Eastern Mountain Sports
- Landry's Bicycles
- The MathWorks
- Natural Sound
- TJX and Carruth Capital
- RCN
- Local residents



How you can help

- Watch for announcements of meetings, work days and other events on website email lists, flyers and newspapers
 - www.CRTrail.org
- Volunteer at work days
- Spread the word

